

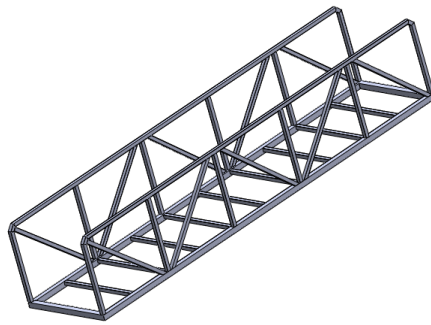


# ADVENTURE MARINE

604 945 2628 ext 2  
Adventuremarine.ca

## 4' X 20' GANGWAY

Starting at **\$2199.00**



The basic ramp is 20 feet long by 53 inches wide and can accommodate a variety of optional extras listed below. You can add a second gangway to make a 40-foot ramp that can be assembled onsite.

### Optional Extras

\*\*\*Decking pricing does not include installation or mounting hardware\*\*\*

1.5" square molded fiberglass grating

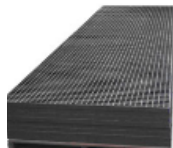


- High grip surface
- Good for all weather
- 1.5" x 1.5" openings

**Best Value**

**\_\_\_20 ft \$953.00**

Mini-Mesh grating



- Ideal for bare feet
- Pet friendly
- 3/4" x 3/4" openings

**\_\_\_20 ft \$998.00**

Pultruded Fiberglass grating



- High grip surface
- Good for all weather
- Aesthetic look

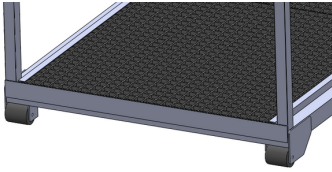
**\_\_\_20 ft \$1322.00**

Thru-Flow Decking



- Gold Standard
- Easy to install
- Light-weight

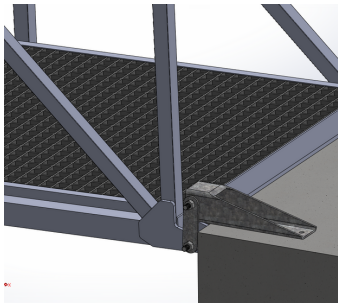
**\_\_\_20 ft \$1731.00**



### UHMW Wheel kit

- 3.5" HUMW wheels.
- Mounting flanges.
- Stainless steel pins.

**\_\_2 wheels \$144.00**

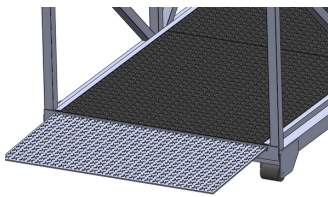


### Swing mounting system

- Galvanized steel pier mounts.
- Delrin anti-wear bushing.
- Grade 8 Galvanized mounting bolts.
- Can be mounted on concrete or wood.
- Full floating design for adverse weather.

*Pier mounting bolts are not included.*

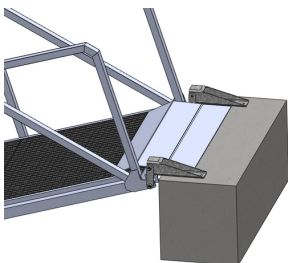
**\_\_kit \$481.00**



### Dock transition plate

- 1/4" checker plate.
- 3/8" welded hinge.
- 45 Deg range of motion

**\_\_kit \$239.00**



### Pier transition plate

- 1/4" checker plate.
- 3/8" welded hinge.
- 45-deg range of motion
- 30-deg bend for a smooth transition at all ramp elevations.

**\_\_kit \$339.00**

**WE DELIVER! This is a great option for customers looking to simplify the order and installation process.**



Pricing is based on your location to and from our shop in Maple Ridge BC, for deliveries longer than a 10-hours round trip total. 3rd party freight services are more competitive. We are happy to provide that service as needed.



**Adventure Marine offers full Installation of your gangway.**

- Ticketed Millwrights do the installation.
- High-quality-marine grade hardware is used.
- Completed in less than a day.

**Things to Consider**

- Pricing is based on the availability of local crane services.
- Travel distance.
- Accommodation requirements.
- Specific site challenges.



**Gangway annual maintenance program**

Inspection/repair and replacement of the following is done during the annual service.

- Ramp hardware.
- Connection pins.
- Delrin anti-wear bushings
- Pier connection brackets.
- UHMW Rollers.
- All weld joints
- Grating hardware.

*All work is conducted by Canadian red seal Millwrights who hold a journeyman ticket.*



To place your order, please contact us via email or phone and one of our representatives will start the build order for you.

[Adventuremarinegreg@gmail.com](mailto:Adventuremarinegreg@gmail.com)

604-945-2628 ext 2